



ACTIVITY PACK 1

Artists Nicola Burrell and Lisa Temple-Cox have been working on a commission inspired by the history and ecology of Bourne Mill and the wider Bourne Valley area. While we're currently unable to deliver our public workshops, we're working on art activities for families to enjoy at home.

For other activities and information about the project see our facebook page Bourne Narratives, visit <https://essexcdp.com/event/bourne-narratives>, or email bournenarratives@gmail.com



Lisa and Nicola in front of Bourne Mill, Colchester

This project is made possible through a commission from Essex Cultural Diversity Project in partnership with the National Trust, funded by Arts Council England and the National Trust



Supported using public funding by
**ARTS COUNCIL
ENGLAND**

Activity 1 : Colouring in waterbirds on Bourne Pond

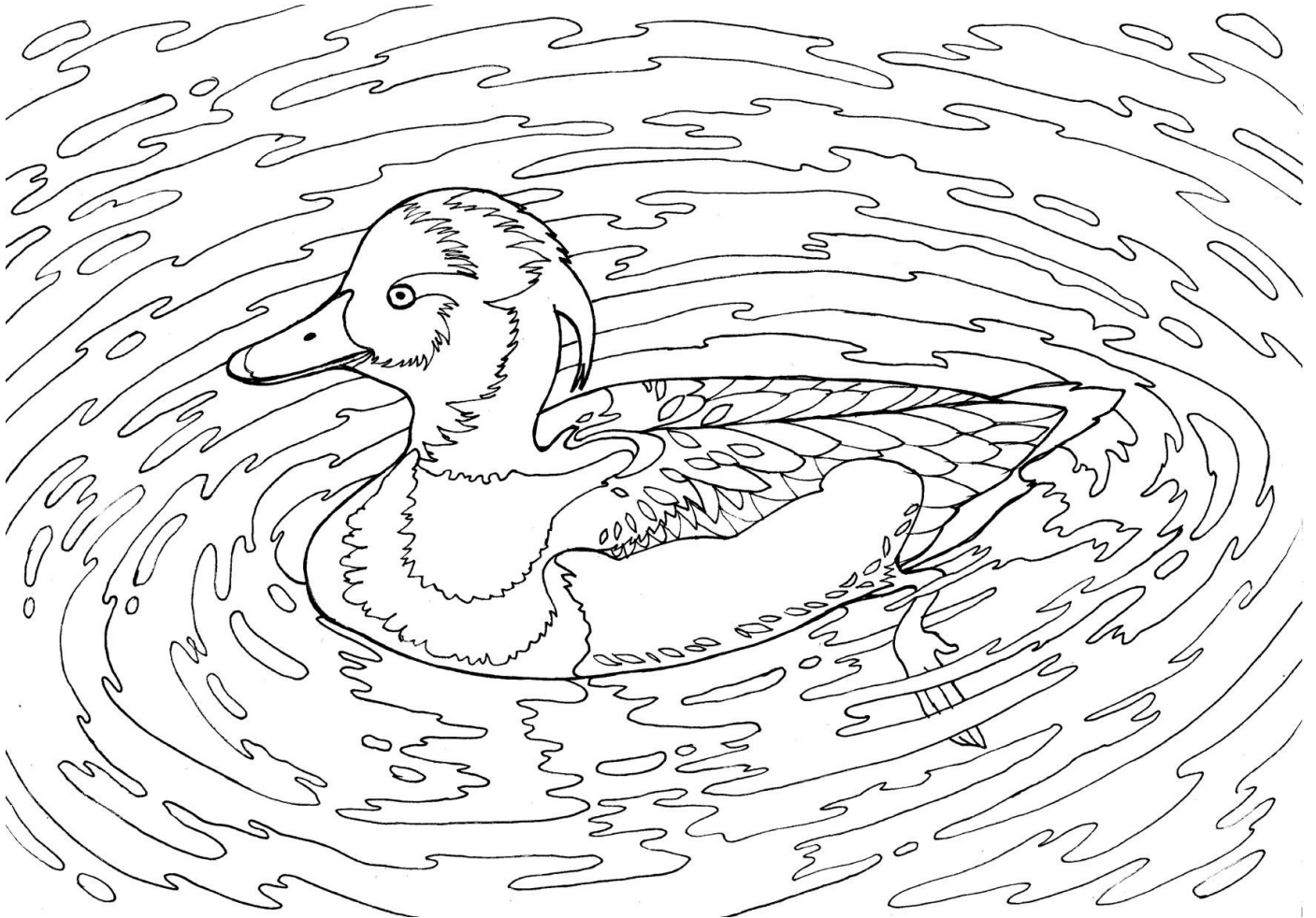
For this activity you will need paints, felt-tips, or colour pencils.

To begin with, you will need to print out the following line drawings.

These are all birds that can be found on Bourne Pond. You could look them up, to try and get the right colours - or go freestyle and invent your own!

Tufted Duck

There are several pairs of these beautiful little ducks on the pond. They're called tufted ducks because of the tuft of feathers sticking out at the back of their heads.



Swans on the pond

These beautiful birds are showing themselves off right in front of Bourne Mill, with clouds in the sky. Try colouring the water in lots of different shades of blue and green!



Mallard on a log

Mallards are very common ducks all around the country. Have you seen some on a pond near you? This is a female, she has a lot of different sorts of feathers on her. Again, you can see Bourne Mill in the distance!



Activity 2: Make a cut and slot swan

For this activity you will need a pair of scissors, some cardboard, and glue.

To begin with, you will need to print out the swan template on the following page.

Then stick this sheet to a piece of card, such as the side of a cereal box.

Then you will need to cut out all of the shapes. Once you have done this, follow the instructions below to slot your swan together! Why not paint or colour in your swan sections before you assemble it?

Step 1:

- take the body to wing joiner (part labelled 1)
- slot the wing pieces into each side (parts labelled 2)



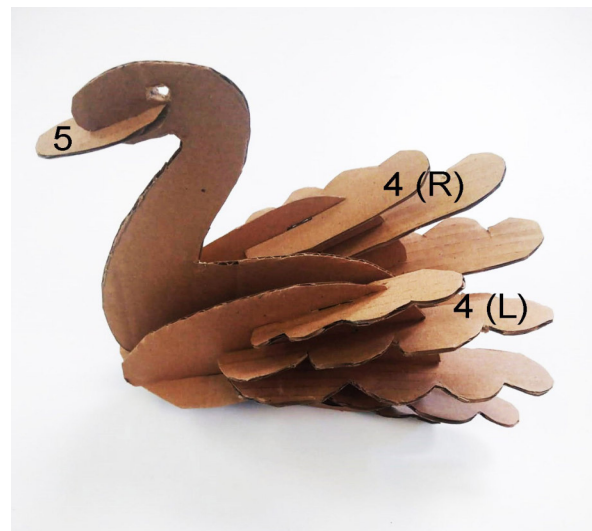
Step 2:

- slide the body (part labelled 3) into the remaining central slot

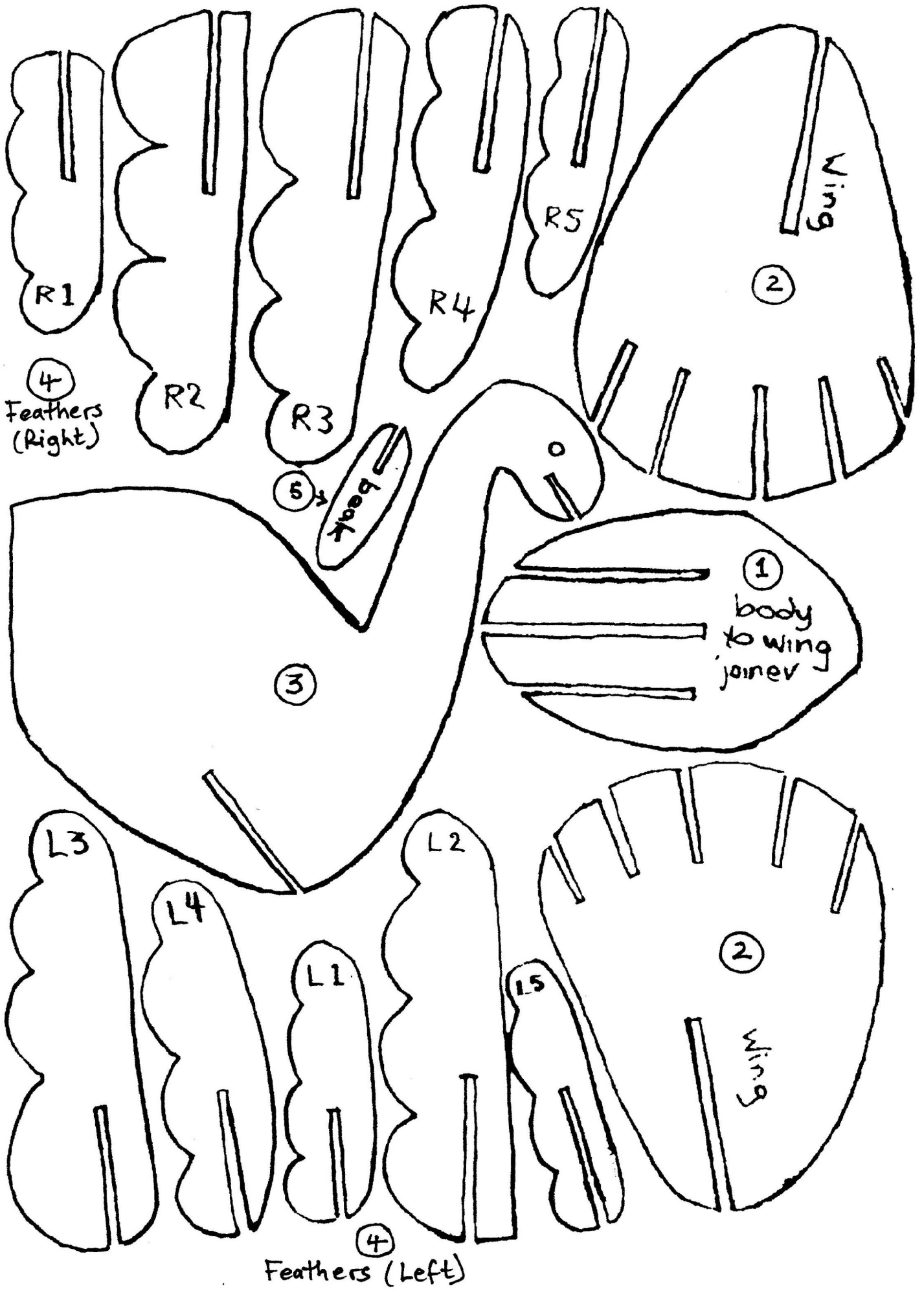


Step 3:

- slot all the feathers (parts labelled 4) onto the wings, starting from 1 at the top to 5 at the bottom – R 1-5 on the right, and L 1-5 on the left.
- Finally, slide the beak in (part labelled 5)



You've made a swan!

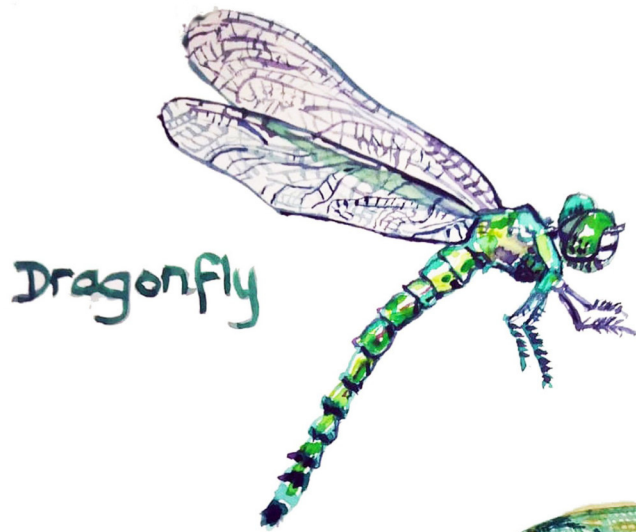


Activity 3 : Name the plants and animals

This drawing shows you some of the different types of animals and plants that can be found in or around Bourne Mill. How many to you recognise? Why not write the name next to the picture. Answers on the next page!



Here are the answers: how did you do? Some of these are quite rare and hard to find, so don't worry if you didn't get them all!



Dragonfly



Stag Beetle



Pike



Swan Mussel



Kingfisher



Badger



Marsh-cinquefoil
Comarum palustre



Pipistrelle Bat



Gudgeon
Tench

Hey - Why not make your own sheet of the plants and animals that you can find in your garden?